

Anti-Prolactin Picoband Antibody
Catalog # ABO12052**Specification**

Anti-Prolactin Picoband Antibody - Product Information

Application	WB, E
Primary Accession	P01236
Host	Rabbit
Reactivity	Human
Clonality	Polyclonal
Format	Lyophilized

Description

Rabbit IgG polyclonal antibody for Prolactin(PRL) detection. Tested with WB, ELISA in Human.

Reconstitution

Add 0.2ml of distilled water will yield a concentration of 500ug/ml.

Anti-Prolactin Picoband Antibody - Additional Information

Gene ID 5617

Other Names

Prolactin, PRL, PRL

Calculated MW

25876 MW KDa

Application Details

Western blot, 0.1-0.5 µg/ml, Human, -
ELISA , 0.1-0.5 µg/ml, Human

Subcellular Localization

Secreted.

Protein Name

Prolactin

Contents

Each vial contains 5mg BSA, 0.9mg NaCl, 0.2mg Na₂HPO₄, 0.05mg Na₃.

Immunogen

E.coli-derived human Prolactin recombinant protein (Position: L29-227C). Human Prolactin shares 60% and 63% amino acid (aa) sequence identity with mouse and rat Prolactin, respectively.

Purification

Immunogen affinity purified.

Cross Reactivity

No cross reactivity with other proteins.

Storage

At -20°C for one year. After reconstitution, at 4°C for one month. It can also be aliquotted and stored frozen at -20°C for a longer time. Avoid repeated freezing and thawing.

Sequence Similarities

Belongs to the somatotropin/prolactin family.

Anti-Prolactin Picoband Antibody - Protein Information

Name PRL

Function

Prolactin acts primarily on the mammary gland by promoting lactation.

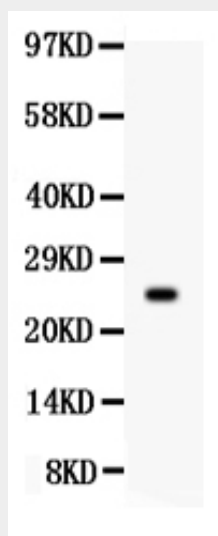
Cellular Location

Secreted.

Anti-Prolactin Picoband Antibody - Protocols

Provided below are standard protocols that you may find useful for product applications.

- [Western Blot](#)
- [Blocking Peptides](#)
- [Dot Blot](#)
- [Immunohistochemistry](#)
- [Immunofluorescence](#)
- [Immunoprecipitation](#)
- [Flow Cytometry](#)
- [Cell Culture](#)

Anti-Prolactin Picoband Antibody - Images

Anti- Prolactin Picoband antibody, PB361, Western blotting All lanes: Anti Prolactin (ABO12052) at 0.5ug/ml WB: MCF-7 Whole Cell Lysate at 40ug Predicted bind size: 25KD Observed bind size: 25KD

Anti-Prolactin Picoband Antibody - Background

Prolactin (PRL), also known as luteotropic hormone or luteotropin, is a protein that in humans is best known for its role in enabling female mammals to produce milk. This gene encodes the anterior pituitary hormone prolactin. This secreted hormone is a growth regulator for many tissues, including cells of the immune system. It may also play a role in cell survival by suppressing apoptosis, and it is essential for lactation. Alternative splicing results in multiple transcript variants that encode the same protein.